



Research Article

PHARMACEUTICAL PREPARATION, ANALYTICAL EVALUATION AND QUALITY STANDARDIZATION OF *LAKSHADI TAILA* AND ITS MODIFIED DOSAGE FORM LOTION

Anmol^{1*}, Ravi Raj², Suman Lata³¹MD Scholar, ²Professor, ³Associate Professor, Department of Rasa Shastra Evum Bhaishajya Kalpana, IAS&R, Shri Krishna AYUSH University, Kurukshetra, Haryana, India.**Article info****Article History:**

Received: 03-02-2026

Accepted: 17-03-2026

Published: 06-05-2026

KEYWORDS:*Lakshadi Taila*,
Sneha Kalpana,
Ayurvedic
Pharmaceutics,
Skin Disorders,
Wound Healing**ABSTRACT**

Lakshadi Taila is a classical Ayurvedic medicated oil traditionally used in the management of various dermatological conditions such as wounds, itching, inflammation, and discoloration of the skin. The formulation contains *Laksha* along with several medicinal herbs processed in sesame oil according to the principles of *Sneha Kalpana*. **Aim and Objectives:** To carry out the pharmaceutical preparation, analytical evaluation, and quality standardization of *Lakshadi Taila* and to develop its modified dosage form as a lotion for improved applicability and patient compliance. **Materials and Methods:** *Lakshadi Taila* was prepared according to the classical *Sneha Kalpana* method using authenticated raw drugs. Five batches of the formulation were prepared under identical conditions to ensure reproducibility. The prepared samples were subjected to organoleptic and physicochemical evaluation including parameters such as color, odor, specific gravity, refractive index, acid value, saponification value, peroxide value, and iodine value. Microbial analysis and phytochemical screening were also carried out. Further, a modified dosage form in the form of lotion was developed from the prepared *Lakshadi Taila* and evaluated for its pharmaceutical characteristics. **Results:** All five batches of *Lakshadi Taila* showed comparable organoleptic and physicochemical parameters, indicating uniformity and consistency in preparation. The analytical results were found to be within acceptable limits. The developed lotion exhibited satisfactory consistency, stability, and ease of application. **Conclusion:** The study established the pharmaceutical preparation and analytical standards for *Lakshadi Taila* and demonstrated the feasibility of developing a modified dosage form lotion, which may enhance patient compliance and therapeutic applicability.

INTRODUCTION

Ayurveda describes numerous formulations for the management of skin disorders and wound healing, among which medicated oils prepared through the process of *Sneha Kalpana* hold an important place in Ayurvedic pharmaceutics. These preparations facilitate the extraction of lipid-soluble active principles from medicinal plants and enhance their therapeutic efficacy. *Lakshadi Taila* is one such classical medicated oil described in Ayurvedic texts and is widely used in

the management of various dermatological conditions such as *Vrana* (wounds), *Kandu* (itching), *Daha* (burning sensation), *Dadru* and other skin disorders.

Laksha, the chief ingredient of the formulation, is known for its wound healing and tissue regenerative properties. The formulation also contains several medicinal herbs such as *Haridra*, *Devadaru*, *Musta*, *Kustha*, *Yastimadhu* and *Chandana*, which possess significant anti-inflammatory, antimicrobial, anti-oxidant and soothing properties. These ingredients collectively contribute to the therapeutic effectiveness of *Lakshadi Taila* in maintaining skin health and promoting healing.

Despite the extensive traditional use of classical formulations, scientific validation and standardization are essential to ensure their quality, safety, and reproducibility. Analytical evaluation

Access this article online

Quick Response Code

<https://doi.org/10.47070/ayushdharma.v13i2.2551>Published by Mahadev Publications (Regd.)
publication licensed under a Creative Commons
Attribution-NonCommercial-ShareAlike 4.0
International (CC BY-NC-SA 4.0)

including organoleptic, physicochemical, and microbial parameters plays a vital role in establishing quality standards for Ayurvedic formulations.

Furthermore, the development of modified dosage forms from classical preparations can improve patient compliance, ease of application, and therapeutic acceptability. In this context, the present study focuses on the pharmaceutical preparation, analytical evaluation and quality standardization of *Lakshadi Taila* and the development of its modified dosage form as a lotion.

AIM AND OBJECTIVES

Aim

To carry out the pharmaceutical preparation, analytical evaluation and quality standardization of *Lakshadi Taila* and to develop its modified dosage form as a lotion for improved applicability.

Objectives

1. To prepare *Lakshadi Taila* according to the classical method of *Sneha Kalpana* described in Ayurvedic texts.
2. To perform organoleptic and physicochemical evaluation of the prepared *Lakshadi Taila* for quality assessment.
3. To prepare multiple batches of *Lakshadi Taila* in order to ensure reproducibility and consistency of the formulation.
4. To develop a modified dosage form lotion from *Lakshadi Taila* for better patient compliance and ease of application.
5. To establish analytical parameters for standardization of *Lakshadi Taila* and its lotion formulation.

MATERIALS AND METHODS

Collection and Authentication of Raw Drugs

All herbal ingredients used in the preparation of *Lakshadi Taila* are collected from reliable sources and authenticated based on their morphological and pharmacognostical characteristics as described in the Ayurvedic Pharmacopoeia of India (API). The drugs were cleaned thoroughly to remove foreign matter and dried properly before use.

Preparation of *Lakshadi Taila*

Lakshadi Taila was prepared according to the classical method of *Sneha Kalpana* described in Ayurvedic pharmaceuticals. The raw drugs were converted into coarse powder (*Yavakuta*) for the preparation of *Kwatha* (decoction). The decoction was prepared by boiling the coarse powder of drugs with water until the volume was reduced to one-fourth.

The required quantity of *Tila Taila* (sesame oil) was taken and mixed with the prepared *Kwatha* and *Kalka* (herbal paste) in classical proportion. The mixture was heated gently with continuous stirring until the *Sneha Siddhi Lakshana* (signs of completion of oil preparation) were observed. The prepared oil was then filtered through a clean cloth and stored in airtight containers.

For the purpose of quality standardization and reproducibility, a total of five batches of *Lakshadi Taila* were prepared under identical pharmaceutical conditions.

Ingredients

The main ingredients used in *Lakshadi Taila* include:

Table 1: Details of Drugs In *Lakshadi Taila*

Name of the ingredient	Botanical Name	Part used	Quantity
<i>Kalka Dravyas</i>			
<i>Rasna</i>	<i>Pluchea lanceolata</i>	Leaves	12 gm
<i>Sveta Candana</i>	<i>Santalum album</i>	Heart wood of stem	12 gm
<i>Kustha</i>	<i>Saussurea lappa</i>	Roots	12 gm
<i>Musta</i>	<i>Cyperus rotundus</i>	Rhizomes	12 gm
<i>Asvagandha</i>	<i>Withania somnifera</i>	Roots	12 gm
<i>Haridra</i>	<i>Curcuma longa</i>	Rhizomes	12 gm
<i>Misreya</i>	<i>Foeniculum vulgare</i>	Dried fruits	12 gm
<i>Devadaru</i>	<i>Cedrus deodara</i>	Heart wood	12 gm
<i>Murva</i>	<i>Marsdenia tenacissima</i>	Roots	12 gm
<i>Katuka</i>	<i>Picorrhiza kurroa</i>	Rhizome	12 gm
<i>Nirgundi</i>	<i>Vitex nigundo</i>	Leaves	12 gm
<i>Yastimadhu</i>	<i>Glycyrrhiza glabra</i>	Stem & Root	12 gm

Drava Dravyas			
Laksha Rasa	Laccifera Lacca		3072 gm
Mastu	Whey of curd		3072 gm
Sneha: Tila Taila	Sesamum indicum Linn		768 gm

Rasa Panchak of Kalka Drugs According to API

Table 2: Details of Rasa Panchak of Kalka Drugs^[1]

Drug	Rasa	Guna	Virya	Vipaka	Karma
Asvagandha	Tikta, Kasaya	Laghu	Usna	Madhura	Rasayna, Vatakaphapha, Balya, Vajikarana
Haridra	Katu, Tikta	Ruksha	Usna	Katu	Krmighna, Kushaghna, Varnya, Visaghna, Kaphapittanut, Pramehanasaka
Devadaru	Tikta	Laghu, Snigdha	Usna	Katu	Kaphahara, Vatahara, Dustavrana Sodhaka
Katuka	Katu, Tikta	Laghu	Usna	Katu	Hrdya, Pittahara, Dipani, Bhedini, Jvarahara
Murva	Madhura, Tikta	Guru, Sara	Usna	Madhura	Kaphahara, Pittahara, Vatahara, Visaghna
Kustha	Katu, Tikta	Laghu	Usna	Katu	Kaphavatajit, Raktasodhaka, Varnya, Sukrala
Yastimadhu	Madhura	Guru, Snigdha	Sita	Madhura	Balya, Caksusya, Vrsya, Varnya, Vatapittajit, Raktaprasadana
Sveta candana	Madhura, Tikta	Laghu, Ruksha	Sita	Katu	Hrdya, Krmighna, Kaphahara, Pittahara, Vrsya, Varnya, Visaghna, Trsnahara
Musta	Katu, Tikta, Kasaya	Laghu, Ruksha	Sita	Katu	Sothahara, Dipana, Grahi, Krmighna, Pacana, Visaghna Jvaraghna
Rasna	Tikta	Guru	Usna	Katu	Amapacana, Kaphavatahara
Nirgundi	Katu, Tikta, Kasaya	Laghu	Usna	Katu	Kesya, Kaphasamaka, Vatasamaka, Sophahara, Caksusyam, Visaghna, Smtiprada, Anulomna
Misreya	Madhura, Katu, Tikta	Laghu, Ruksha	Sita	Madhura	Anulomana, Balya, Depana, Vatapittahara, Amadosahara

Method of Preparation

Lakshadi Taila is prepared according to the Sneha Kalpana method described in classical Ayurvedic texts.

Preparation of Laksha Rasa – Coarse powder of the Laksha is boiled with water until the volume reduces to one-fourth.



Fig:1.1 Laksha



Fig:1.2 Raw Laksha



Fig:1.3 Laksha in Kharal



Fig:1.4 Yavkut form of Laksha



Fig:1.5 Boiling of Laksha in water



Fig:1.6 Formation of Laksha Rasa



Fig:1.7 Sieving of Laksha rasa



Fig:1.8 Laksha Rasa

Preparation of Mastu - Mastu is a traditional Ayurvedic fermented liquid derived from curd (*Dadhi*). It is the supernatant watery portion that separates out from curd when it is left undisturbed or slightly churned.



Fig:2.1 Dahi



Fig:2.2 Straining of Dahi via muslin cloth



Fig:2.3 Formation of Pottali



Fig:2.4 Mastu



Fig:2.5 Mastu



Fig:2.6 pH of Mastu

Preparation of Kalka - Fine powder of the herbal drugs is triturated with water to prepare a paste.

Fig. 3: All Kalka Dravyas of Lakshadi Taila



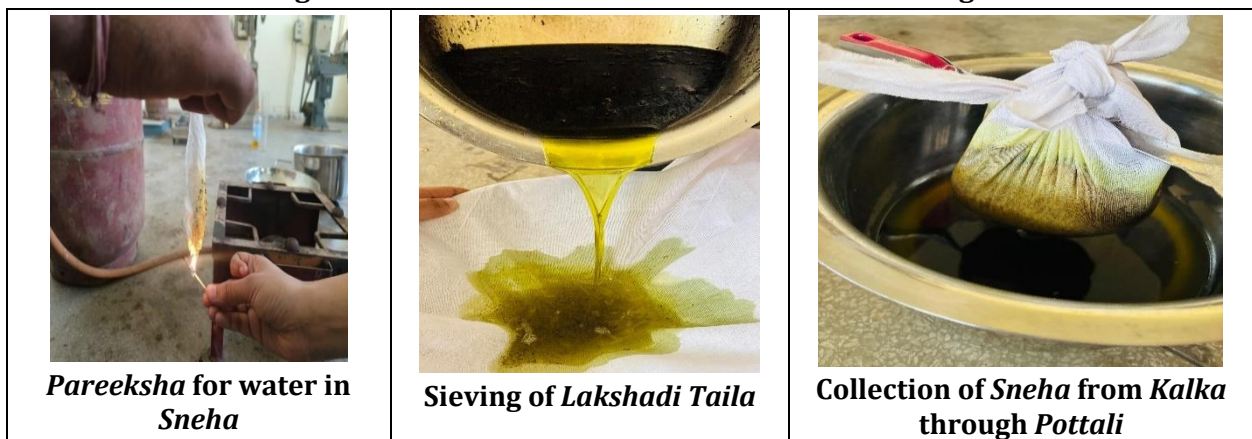
Sneha Paka – Sesame oil, decoction, *Mastu* and herbal paste are mixed in classical proportion and heated with continuous stirring.

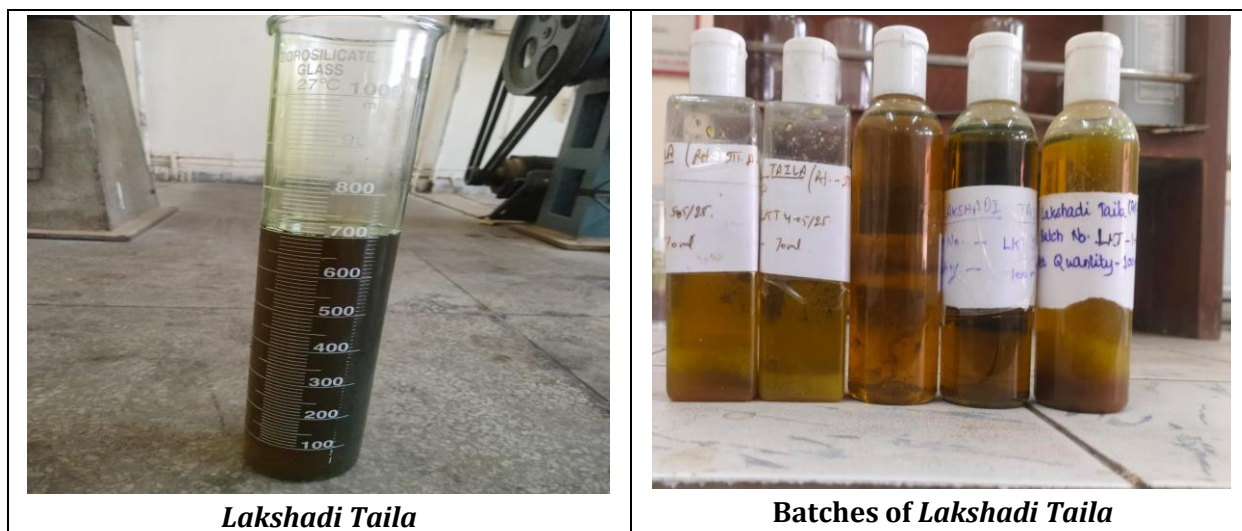
Fig. 4: Formulation of Lakshadi Taila



1. **Sneha Siddhi Lakshana**– The completion of the process is confirmed by classical signs such as *Varti Vata Sneha Kalka Yadangulya Vimardita, Shabdaheeno Agni niudipta, Phenoudgama Taila, Gandh varna utapatti.*
2. **Filtration and Storage** – The prepared oil is filtered and stored in airtight containers.

Fig. 5: Sneha Siddhi Lakshana & Filtration and Storage





Analytical Evaluation

Organoleptic Parameters of crude drugs

Table 3: Detail of the parameters used for the analysis of crude drugs according to API

S.No.	Drugs	Description	Colour	Odour	Taste
1.	<i>Asvagandha</i>	Greyish yellow roots	Greyish yellow	Characteristic	Bitter & acid
2.	<i>Rasna</i>	Green dried leaves	Green	Characteristic	Characteristic
3.	<i>Sveta candana</i>	White brown heart wood	White brown	Characteristic	Characteristic
4.	<i>Kustha</i>	Greyish to dull brown roots	Greyish	Aromatic	Bitter
5.	<i>Musta</i>	Dark brown dried rhizome	Dark brown	Pleasant	Characteristic
6.	<i>Haridra</i>	Yellowish brown rhizome	Yellowish brown	Characteristic	Characteristic
7.	<i>Misreya</i>	Greenish seeds	Greenish	Aromatic	Bitter
8.	<i>Devadaru</i>	Yellowish brown heart wood	Yellowish brown	Aromatic	Characteristic
9.	<i>Murva</i>	Brownish roots	Brownish	Characteristic	Characteristic
10.	<i>Katuka</i>	Greyish brown dried rhizome	Greyish brown	Pleasant	Bitter
11.	<i>Nirgundi</i>	Green dried leaves	Green	Characteristic	Characteristic
12.	<i>Yastimadhu</i>	Yellowish brown dried roots	Yellowish brown	Faint	Sweet

Physico-Chemical Parameters of crude drugs

Table 4: Detail of the parameters of Physico-Chemical Parameters of crude drugs

S.No.	Drugs	Foreign Matter (%w/w)	Total ash (%w/w)	Acid insoluble ash (% w/w)	Alcohol soluble extractive (%w/w)	Water Soluble extractive (%w/w)
1.	<i>Asvagandha</i>	Nil	3.79	0.62	17.33	20.67
2.	<i>Rasna</i>	Nil	13.76	1.08	11.37	16.54
3.	<i>Sveta candana</i>	Nil	0.55	0.02		2.46
4.	<i>Kustha</i>	Nil	4.0	1.0	13.58	21.94
5.	<i>Musta</i>	0.32	4.10	0.86	11.76	18.43
6.	<i>Haridra</i>	Nil	5.48	0.62	13.70	19.50
7.	<i>Misreya</i>	0.23	7.59	1.0		17.25
8.	<i>Devadaru</i>	Nil	0.03	0.001	7.89	2.07

9.	<i>Murva</i>	Nil	5.62	0.88		11.35
10.	<i>Katuka</i>	Nil	2.97	0.43	12.34	24.05
11.	<i>Nirgundi</i>	Nil	8.0	0.92	11.90	21.78
12.	<i>Yastimadhu</i>	Nil	4.86	0.72	10.82	20.0

Analytical Evaluation of *Lakshadi Taila*

Table 5: Results of all physiochemical parameters of *Lakshadi Taila*

S.No.	Test Name	Batch-1 LKT 01-05/25	Batch-2 LKT 02-05/25	Batch-3 LKT 03-05/25	Batch-4 LKT 04-05/25	Batch-5 LKT 05-05/25	Mean Value
1	Description	Liquid oil	Liquid oil	Liquid oil	Liquid oil	Liquid oil	Liquid oil
2	Uniformity of weight	100ml	100ml	100	100ml	100ml	100 ml
3	Colour	Light yellowish	Light yellowish	Light yellowish	Light yellowish	Light yellowish	Light yellowish
4	Odour	Characteristic	Characteristic	Characteristic	Characteristic	Characteristic	Characteristic
5	Refractive Index at 40°	0.936	0.932	0.933	0.936	0.930	0.933
6	Acid value test	2.12	2.16	2.16	2.10	2.11	2.13
7	Wt/ml	1.456	1.462	1.461	1.460	1.462	1.460
8	Mineral oil	Absent	Absent	Absent	Absent	Absent	Absent
9	Saponification Value	195	196	198	192	195	195
10	TLC/ Composition	Sesame oil, <i>Sounf</i> , <i>Haridra</i> , <i>Rasna</i> , <i>Asvagandha</i>	Sesame oil, <i>Sounf</i> , <i>Haridra</i> , <i>Rasna</i> , <i>Asvagandha</i>	Sesame oil, <i>Sounf</i> , <i>Haridra</i> , <i>Rasna</i> , <i>Asvagandha</i>	Sesame oil, <i>Sounf</i> , <i>Haridra</i> , <i>Rasna</i> , <i>Asvagandha</i>	Sesame oil, <i>Sounf</i> , <i>Haridra</i> , <i>Rasna</i> , <i>Asvagandha</i>	Sesame oil, <i>Sounf</i> , <i>Haridra</i> , <i>Rasna</i> , <i>Asvagandha</i>
11	Total Fungal (Y&M) Count	42 cfu/ml	45 cfu/ml	28 cfu/ml	59 cfu/ml	73 cfu/ml	49 cfu/ml
12	Total Viable Aerobic Count	159 cfu/ml	148 cfu/ml	102 cfu/ml	174 cfu/ml	129 fu	142 cfu/ml
13	Heavy Metal Analysis	BLQ (LOQ)	BLQ (LOQ)	BLQ (LOQ)	BLQ (LOQ)	BLQ (LOQ)	BLQ (LOQ)
	Lead (Pb)	0.1	0.1	0.1	0.1	0.1	0.1
	Cadmium (Cd)	0.1	0.1	0.1	0.1	0.1	0.1
	Mercury (Hg)	0.1	0.1	0.1	0.1	0.1	0.1
	Arsenic (As)	0.1	0.1	0.1	0.1	0.1	0.1
14	Total Aflatoxins	BLQ (LOQ)	BLQ (LOQ)	BLQ (LOQ)	BLQ (LOQ)	BLQ (LOQ)	BLQ (LOQ)
	Aflatoxin B1	0.5	0.5	0.5	0.5	0.5	0.5
	Aflatoxin B2	0.5	0.5	0.5	0.5	0.5	0.5
	Aflatoxin G1	0.5	0.5	0.5	0.5	0.5	0.5
	Aflatoxin G2	0.5	0.5	0.5	0.5	0.5	0.5

Microbial Analysis

Microbial testing is carried out to ensure safety of the formulation. The parameters include:

- Total bacterial count

- Total fungal count
- Absence of pathogenic organisms

1	Total Fungal (Y&M) Count	42 cfu/ml	45 cfu/ml	28 cfu/ml	59 cfu/ml	73 cfu/ml	49 cfu/ml
2	Total Viable Aerobic Count	159 cfu/ml	148 cfu/ml	102 cfu/ml	174 cfu/ml	129 cfu	142 cfu/ml

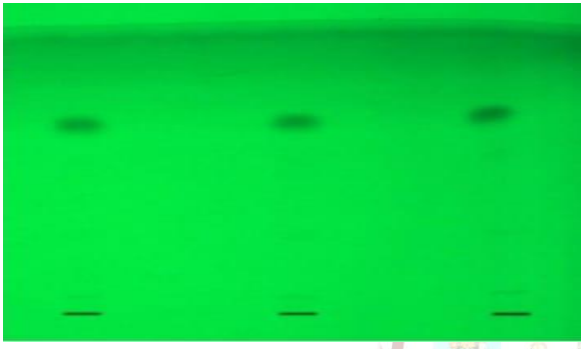
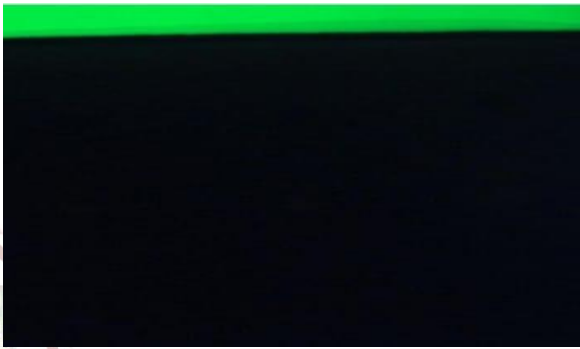

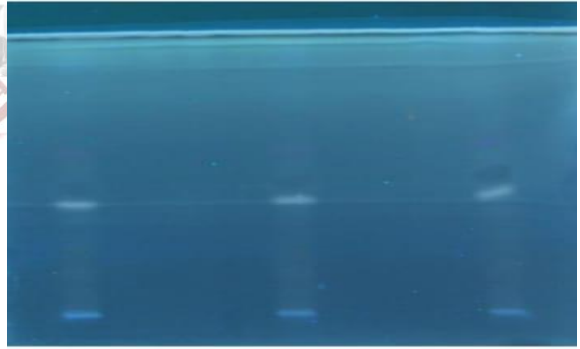


Standardization

For standardization of the formulation, five separate batches of *Lakshadi Taila* were prepared following the classical method of *Sneha Kalpana* under identical conditions. The preparation of multiple batches was carried out to ensure reproducibility, consistency, and reliability of the pharmaceutical process. Each batch was subjected to organoleptic and physicochemical evaluation. The results obtained from all five batches were compared to establish uniform quality parameters for the formulation.

HPTLC

Fingerprint Analysis

Visualisation of *Lakshadi Taila* on TLC plates

	Without Derivatisation	With Derivatisation
254 nm		
366 nm		
White light		

Results of HPTLC for *Lakshadi Taila*

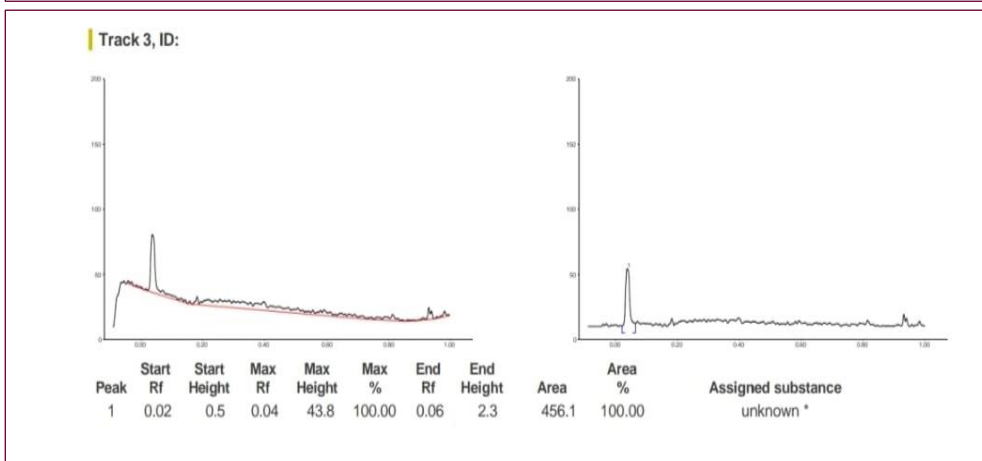
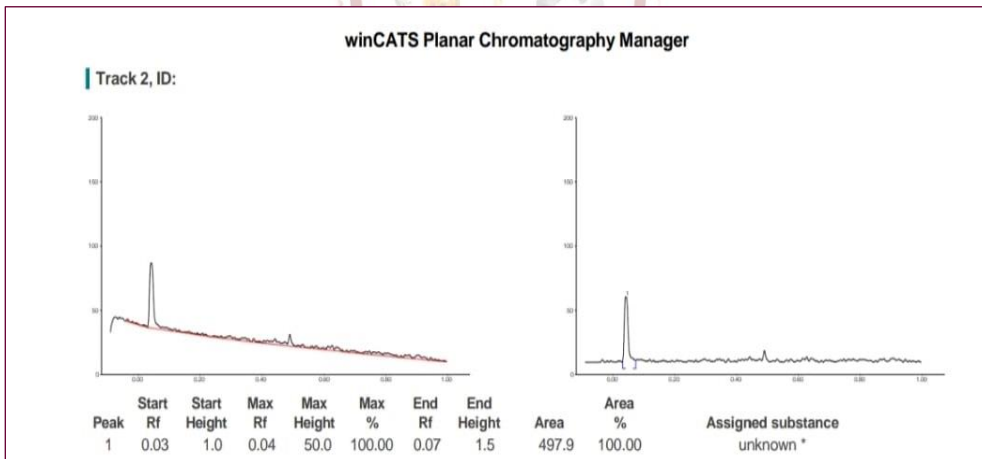
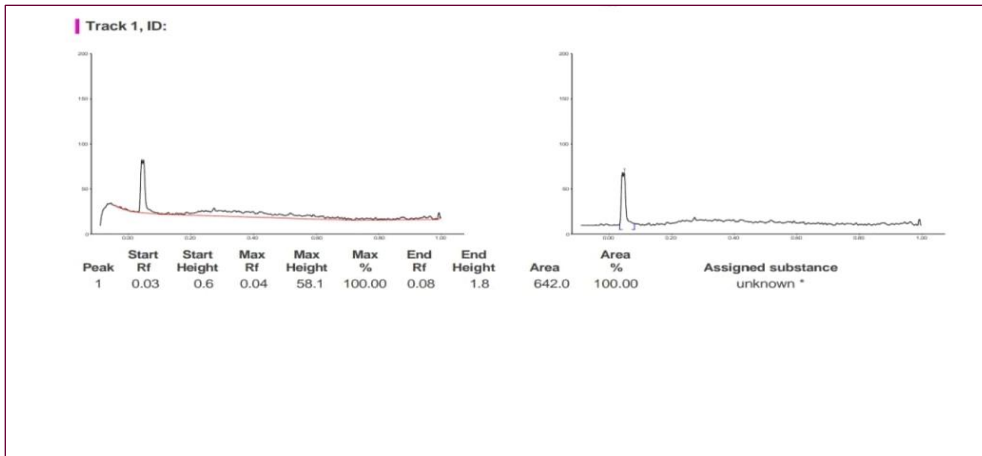
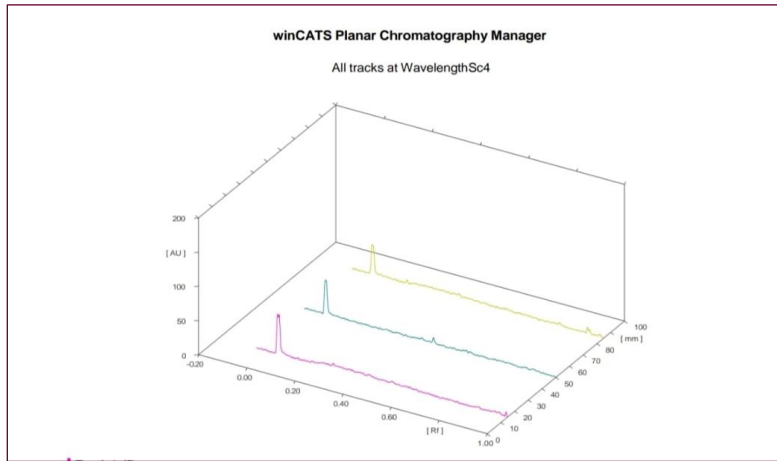
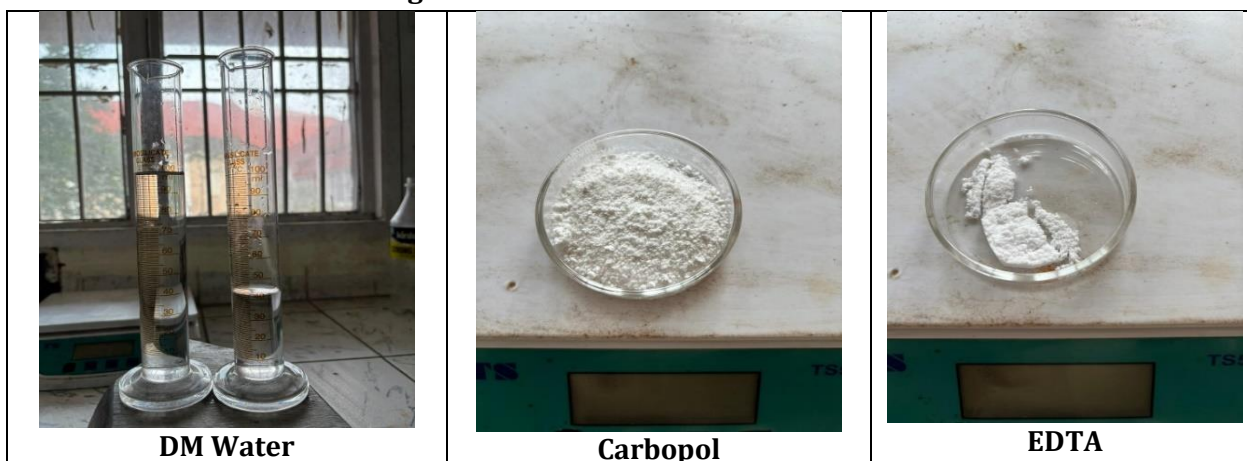


Table 6: Mean (Average) value of *Taila* recorded for any analytical parameter of the *Taila*

Analytical Tests	Mean Value
Description	Liquid oil
Uniformity of weight	100 ml
Colour	Light yellowish
Odour	Characteristic
Refractive Index at 40°	0.933
Acid value test	2.13
Wt/ml	1.460
Mineral oil	Absent
Saponification Value	195
TLC/Composition	Sesame oil, <i>Sounf</i> , <i>Haridra</i> , <i>Rasna</i> , <i>Asvagandha</i>
Total Fungal (Y&M) Count	49 cfu/ml
Total Viable Aerobic Count	142 cfu/ml
Heavy Metal Analysis	BLQ (LOQ)
Lead (Pb)	0.1
Cadmium (Cd)	0.1
Mercury (Hg)	0.1
Arsenic (As)	0.1
Total Aflatoxins	BLQ (LOQ)
Aflatoxin B1	0.5
Aflatoxin B2	0.5
Aflatoxin G1	0.5
Aflatoxin G2	0.5

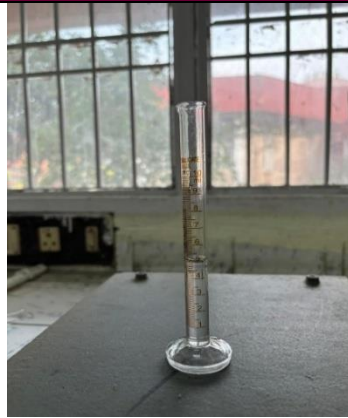
Preparation of *Lakshadi* Lotion

A modified dosage form in the form of *Lakshadi* lotion was prepared using the previously prepared *Lakshadi Taila* as the active ingredient. Suitable emulsifying agents, stabilizers and purified water were used to develop the lotion formulation. The ingredients were mixed under controlled conditions to obtain a stable emulsion with uniform consistency suitable for topical application.

Fig: 6 Formulation of *Lakshadi* Lotion



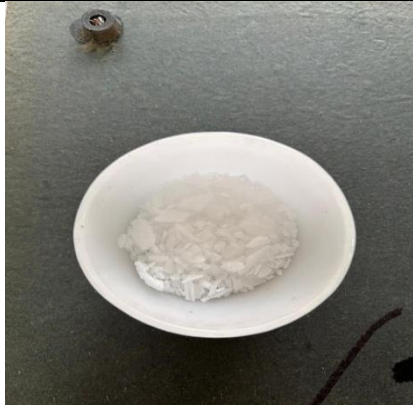
Coco Butter



Glycerin



Lakshadi Taila



E-Wax



All ingredients of Lotion



Take water in a beaker



Adding Carbopol in Water



Stir it Gently



Add Lakshadi Taila



Stir it Gently



Lakshadi Lotion



Batches of Lakshadi Lotion

Analytical Evaluation

The prepared *Lakshadi Taila* and its lotion formulation were subjected to various analytical parameters including:

Organoleptic evaluation

Color, odor, appearance and texture.

Physico-chemical parameters

Specific gravity, refractive index, acid value, saponification value, peroxide value and iodine value.

Microbial analysis

Total bacterial count, total fungal count and detection of pathogenic organisms.

Table 7: Results of all physicochemical parameters of *Lakshadi Taila*

Organoleptic Characteristic	Batch-1 LKL 01-08/25	Batch-2 LKL 02-08/25	Batch-3 LKL 03-08/25	Batch-4 LKL 04-08/25	Batch-5 LKL 05-08/25	Mean Value
Appearance	Viscous Lotion	Viscous Lotion	Viscous Lotion	Viscous Lotion	Viscous Lotion	Viscous Lotion
Color	Yellow	Yellow	Yellow	Yellow	Yellow	Yellow
Odour	Characteristic	Characteristic	Characteristic	Characteristic	Characteristic	Characteristic
pH Value	5.80	5.95	6.07	5.99	6.05	5.97
Viscosity	2800 cP	2950 cP	2700 cP	2800 cP	2700 cP	2790 cP
Homogeneity	Homogeneous	Homogeneous	Homogeneous	Homogeneous	Homogeneous	Homogeneous
Spreadability	4.0 seconds	5.0 seconds	5.0 seconds	4.0 seconds	5.0 seconds	4.6 seconds
Irritancy Test	No skin irritation, redness, itching, or inflammation after application	No skin irritation, redness, itching, or inflammation after application	No SKIN irritation, redness, itching, or inflammation after application	No skin irritation, redness, itching, or inflammation after application	No skin irritation, redness, itching, or inflammation after application	No skin irritation, redness, itching, or inflammation after application
High Performance Thin Layer Chromatography	Data attached	Data attached	Data attached	Data attached	Data attached	Data attached
Thermal stability (At 5, 25, 45°C for 5 days)	Stable	Stable	Stable	Stable	Stable	Stable
Preference Test (Absorption Test)	10 seconds	12 seconds	10 seconds	11 seconds	10 seconds	10.6 seconds

The results obtained from the analysis of different batches were compared to establish quality standards and uniformity of the formulation.

Table 8: Mean (Average) value of Lotion recorded for any analytical parameter of the Lotion

Organoleptic Characteristics	Mean Value
Appearance	Viscous lotion
Color	Yellow
Odour	Characteristic
pH Value	5.97
Viscosity	2790 cP

Homogeneity	Homogeneous
Spreadability	4.6 seconds
Irritancy test	No skin irritation, redness, itching, or inflammation after application.
High Performance Thin Layer Chromatography	Show same rf value or presence of ingredients of <i>Lakshadi Taila</i> .
Thermal stability (At 5, 25, 45°C for 5 days)	Stable

DISCUSSION

Lakshadi Taila is a classical Ayurvedic medicated oil widely used in the management of various dermatological conditions. The formulation contains *Laksha* as the main ingredient along with several medicinal herbs such as *Haridra*, *Devadaru*, *Musta*, *Kustha*, *Yastimadhu* and *Chandana*, which are known for their therapeutic properties. These ingredients possess anti-inflammatory, antimicrobial, antioxidant and wound-healing activities, which contribute to the effectiveness of the formulation in the treatment of skin disorders.

In the present study, *Lakshadi Taila* was prepared according to the classical principles of *Sneha Kalpana*. The preparation process plays a crucial role in extracting the lipid-soluble active constituents from the herbal drugs into the oil base. The use of *Tila Taila* (sesame oil) as the base oil enhances the penetration of active constituents into the skin and also contributes to the nourishing and healing effects of the formulation.

For the purpose of standardization and reproducibility, five batches of *Lakshadi Taila* were prepared under identical pharmaceutical conditions. The organoleptic parameters such as color, odor and appearance were found to be consistent in all batches, indicating uniformity in the preparation process. Similarly, the physicochemical parameters including specific gravity, refractive index, acid value, saponification value, peroxide value and iodine value were found within acceptable limits, which confirms the quality and stability of the formulation.

Microbial analysis revealed that the formulation was free from pathogenic microorganisms and the microbial load was within permissible limits, ensuring the safety of the preparation for topical application.

Furthermore, a modified dosage form in the form of lotion was developed from *Lakshadi Taila* to improve ease of application and patient compliance. The lotion formulation exhibited satisfactory consistency, stability and spreadability. The development of such modified dosage forms can enhance the acceptability of classical Ayurvedic formulations in modern therapeutic practice.

Overall, the findings of the present study establish the pharmaceutical preparation method, analytical standards and feasibility of developing a modified dosage form of *Lakshadi Taila*, which may be useful for ensuring quality control and improving its therapeutic application.

CONCLUSION

The present study focused on the pharmaceutical preparation, analytical evaluation and quality standardization of *Lakshadi Taila* along with the development of its modified dosage form lotion. *Lakshadi Taila* was prepared according to the classical method of *Sneha Kalpana*, and five batches were prepared to ensure reproducibility and consistency of the formulation. The organoleptic and physicochemical parameters of all batches were found to be within acceptable limits, indicating uniform quality and stability of the prepared formulation. Microbial analysis also confirmed that the formulation was safe for topical use.

Furthermore, a modified dosage form in the form of *Lakshadi* lotion was successfully developed to enhance ease of application and patient compliance. The lotion exhibited satisfactory pharmaceutical characteristics such as good consistency, spreadability and stability. The study establishes preliminary analytical standards for *Lakshadi Taila* and its lotion formulation, which may be useful for quality control and future research. Further clinical studies may be conducted to evaluate the therapeutic efficacy of the formulation in dermatological conditions.

Acknowledgement

The authors express their sincere gratitude to the faculty and staff of the P.G. Department of Rasa Shastra Evum Bhaishajya Kalpana, Institute for Ayurved Studies & Research, Shri Krishna AYUSH University, Kurukshetra, for their guidance and support during the course of this study.

REFERENCES

1. Sharangadhara. Sharangadhara Samhita. Edited by Pandit Parashuram Shastri. Varanasi: Chaukhambha Orientalia; 2016. Sneha Kalpana Adhyaya.

2. Govind Das Sen. Bhaishajya Ratnavali. Edited by Ambikadutta Shastri. Varanasi: Chaukhambha Prakashan; 2017.
3. The Ayurvedic Pharmacopoeia of India. Part I. Vol. I–VI. New Delhi: Ministry of AYUSH, Government of India; 2001.
4. Sharma PV. Dravyaguna Vijnana. Vol. II. Varanasi: Chaukhambha Bharati Academy; 2013.
5. Kirtikar KR, Basu BD. Indian Medicinal Plants. Vol. I–IV. Dehradun: International Book Distributors; 2006.
6. Nadkarni KM. Indian Materia Medica. Vol. I. Mumbai: Popular Prakashan; 2009.
7. Trease GE, Evans WC. Pharmacognosy. 16th ed. London: Saunders Elsevier; 2009.
8. Kokate CK, Purohit AP, Gokhale SB. Pharmacognosy. 49th ed. Pune: Nirali Prakashan; 2014.
9. Harborne JB. Phytochemical Methods: A Guide to Modern Techniques of Plant Analysis. London: Chapman and Hall; 1998.
10. Anonymous. Quality Control Methods for Medicinal Plant Materials. Geneva: World Health Organization; 2011.
11. Wallis TE. Textbook of Pharmacognosy. 5th ed. New Delhi: CBS Publishers; 2005.
12. Sharma PC, Yelne MB, Dennis TJ. Database on Medicinal Plants Used in Ayurveda. Vol. II. New Delhi: CCRAS; 2005.
13. Mukherjee PK. Quality Control of Herbal Drugs. New Delhi: Business Horizons; 2019.
14. Pandey G. Dravyaguna Vijnana. Varanasi: Chaukhambha Krishnadas Academy; 2008.
15. Bhavamishra. Bhavaprakasha Nighantu. Varanasi: Chaukhambha Sanskrit Bhawan; 2015.

Cite this article as:

Anmol, Ravi Raj, Suman Lata. Pharmaceutical Preparation, Analytical Evaluation and Quality Standardization of Lakshadi Taila and its Modified Dosage Form Lotion. AYUSHDHARA, 2026;13(2):16-29.

<https://doi.org/10.47070/ayushdhara.v13i2.2551>

Source of support: Nil, Conflict of interest: None Declared

***Address for correspondence**

Dr. Anmol

MD Scholar,

Department of Rasa Shastra Evum

Bhaishajya Kalpana, IAS&R, Shri

Krishna AYUSH University,

Kurukshetra, Haryana

Email: anmoljaglan1@gmail.com

Disclaimer: AYUSHDHARA is solely owned by Mahadev Publications - A non-profit publications, dedicated to publish quality research, while every effort has been taken to verify the accuracy of the content published in our Journal. AYUSHDHARA cannot accept any responsibility or liability for the articles content which are published. The views expressed in articles by our contributing authors are not necessarily those of AYUSHDHARA editor or editorial board members.

